



**QUICK-FIT**



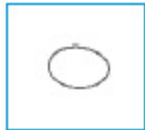
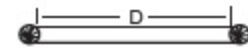
**THE WORLD'S FASTEST DUCTING**

**O-RING**

Ø	PART NO.	WEIGHT
3"	3262-0300	0.01
4"	3262-0400	0.02
5"	3262-0500	0.03
6"	3262-0600	0.04
7"	3262-0700	0.08
8"	3262-0800	0.09
9"	3262-0900	0.10
10"	3262-1000	0.11
11"	3262-1100	0.17
12"	3262-1200	0.22
13"	3262-1300	0.23
14"	3262-1400	0.25
15"	3262-1500	0.26
16"	3262-1600	0.27
17"	3262-1700	0.28
18"	3262-1800	0.29
20"	3262-2000	0.31
22"	3262-2200	0.36
24"	3262-2400	0.40



- Replacement O-ring for use with Adj. Nipples.
- Specify Black or Red.

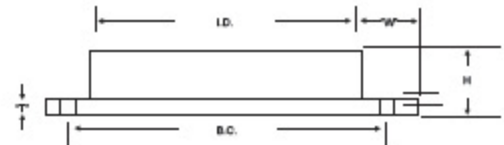


**ANGLE FLANGE**

Ø	PART NO.	I.D.	H	W	T	B.C.	NO. OF BOLTS	Ø OF BOLT HOLES	WEIGHT
3"	3261-0300	3 1/16"	7/8"	1"	1/8"	4 5/16"	6	9/32	0.65
4"	3261-0400	4 1/16"	15/16"	1"	1/8"	5 5/16"	6	9/32	0.85
5"	3261-0500	5 1/16"	1"	1"	1/8"	6 5/16"	6	9/32	1.05
6"	3261-0600	6 3/32"	1"	1"	1/8"	7 5/16"	6	9/32	1.40
7"	3261-0700	7 1/8"	1"	1 1/8"	1/8"	8 1/2"	6	3/8	1.80
8"	3261-0800	8 1/8"	1 1/8"	1 1/8"	1/8"	9 9/16"	6	3/8	2.00
9"	3261-0900	9 1/8"	1 1/4"	1 1/4"	1/8"	10 5/8"	6	7/16	2.25
10"	3261-1000	10 1/8"	1 1/4"	1 3/8"	1/8"	11 13/16"	6	7/16	3.10
11"	3261-1100	11 1/8"	1 1/4"	1 1/2"	1/8"	12 3/4"	6	7/16	3.30
12"	3261-1200	12 1/8"	1 1/2"	1 1/2"	1/8"	14	8	7/16	3.90
13"	3261-1300	13 1/8"	1 1/2"	1 1/2"	1/8"	15	8	7/16	4.00
14"	3261-1400	14 1/8"	1 1/2"	1 1/2"	1/8"	16	8	7/16	4.80
15"	3261-1500	15 1/8"	1 1/2"	1 1/2"	3/16"	17	8	7/16	7.15
16"	3261-1600	16 1/8"	1 1/2"	1 1/2"	3/16"	18	8	7/16	8.05
17"	3261-1700	17 1/8"	1 1/2"	1 1/2"	3/16"	19	8	7/16	8.00
18"	3261-1800	18 1/8"	1 1/2"	1 1/2"	3/16"	20	8	7/16	8.00
19"	3261-1900	19 1/8"	1 1/2"	1 1/2"	3/16"	20 3/4"	12	7/16	8.70
20"	3261-2000	20 1/8"	1 1/2"	1 1/2"	3/16"	21 3/4"	12	7/16	9.80
21"	3261-2100	21 1/8"	1 1/2"	1 1/2"	3/16"	22 3/4"	12	7/16	10.40
22"	3261-2200	22 1/8"	1 1/2"	1 1/2"	3/16"	23 3/4"	12	7/16	11.10
23"	3261-2300	23 1/8"	1 1/2"	1 1/2"	3/16"	24 7/8"	12	7/16	11.75
24"	3261-2400	24 1/8"	1 1/2"	1 1/2"	3/16"	25 7/8"	12	7/16	12.40
25"	3261-2500	25 1/8"	1 1/2"	1 1/2"	3/16"	26 7/8"	16	7/16	15.20
26"	3261-2600	26 1/8"	2"	2"	3/16"	28 3/8"	16	7/16	18.00
27"	3261-2700	27 1/8"	2"	2"	3/16"	29 3/8"	16	7/16	19.00
28"	3261-2800	28 1/8"	2"	2"	3/16"	30 3/8"	16	7/16	20.00
29"	3261-2900	29 1/8"	2"	2"	3/16"	31 3/8"	16	7/16	21.00
30"	3261-3000	30 1/8"	2"	2"	3/16"	32 3/8"	16	7/16	22.00
31"	3261-3100	31 1/8"	2"	2"	3/16"	33 3/8"	16	7/16	22.00
32"	3261-3200	32 1/8"	2"	2"	3/16"	34 3/8"	16	7/16	22.00
33"	3261-3300	33 1/8"	2"	2"	3/16"	35 3/8"	16	7/16	23.00
34"	3261-3400	34 1/8"	2"	2"	3/16"	36 3/8"	16	7/16	24.00
35"	3261-3500	35 1/8"	2"	2"	3/16"	37 3/8"	16	7/16	24.00
36"	3261-3600	36 1/8"	2"	2"	3/16"	38 3/8"	16	7/16	24.00
37"	3261-3700	37 1/8"	2"	2"	3/16"	39 3/8"	24	7/16	25.00
38"	3261-3800	38 1/8"	2"	2"	3/16"	40 3/8"	24	7/16	26.00
39"	3261-3900	39 1/8"	2"	2"	3/16"	41 3/8"	24	7/16	27.00
40"	3261-4000	40 1/8"	2"	2"	3/16"	42 3/8"	24	7/16	28.00



- Galvanized or stainless steel. (Specify if Stainless Steel.)



**ORDERING NOTES:**

Unless specified, 3" through 24" is QF, over 24" is flanged. Data is subject to change without notice. Stainless steel components requiring flanges will be supplied with SS flanges unless otherwise specified. Stainless steel components are manufactured with NO.304 SS. [Prices for SS 316 = SS 304 X 1.25] Adding a SS after standard part numbers specifies a SS part. For special parts or items to be custom manufactured call for quotation.

WWW.DUCTMONKEY.NET • 951-739-9593